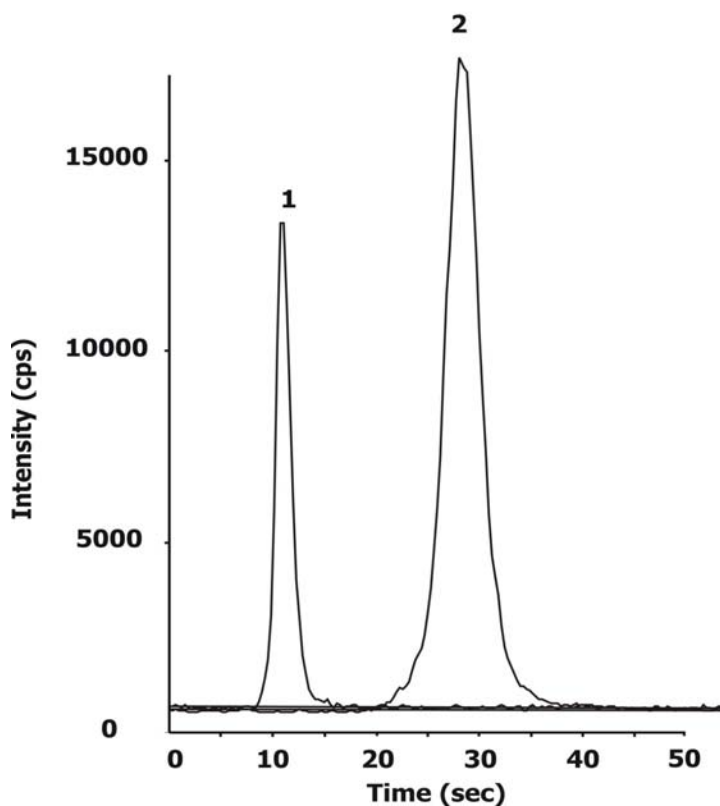


ZIC® -HILIC Separation of Oseltamivir and Oseltamivir Carboxylate

Chromatographic Conditions

Column: ZIC®-HILIC, PEEK 20 x 2.1 mm, 3.5 µm, 100 Å (P/N 2701-022)
 Injection: 2.5 µL in mobile phase
 Detection: Agilent 1200 LC-system coupled online to an API5000 triple quadrupole
 Flow Rate: 1.0 mL/min
 Mobile Phase (v/v): 85%, Acetonitrile
 15%, Ammonium Acetate 10 mM, pH 3.5



Chromatographic Data

No.	Compound	Time (seconds)	Retention factor
	void volume (t_0)	2	-
1	Oseltamivir (5 ng/mL)	11	3.5
2	Oseltamivir carboxylate (30 ng/mL)	29	10.9

By courtesy of: Dr Niklas Lindegård, Faculty of Tropical Medicine,
Mahidol University, Bangkok, Thailand