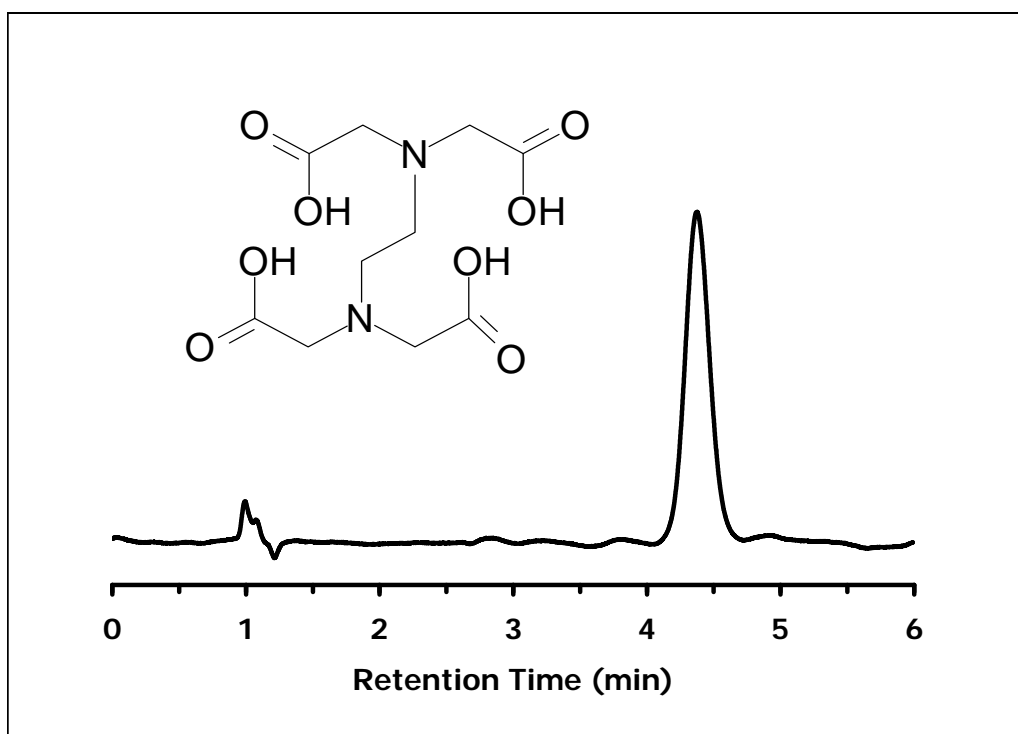


ZIC[®]-HILIC Separation of EDTA

Chromatographic Conditions

Column: ZIC[®]-HILIC, PEEK 50 x 4.6 mm, 5 μm, 200 Å (P/N 2712-055)
Injection: 10 μL of a 4mM standard solution in mobile phase
Detection: UV @ 210 nm (UFS 1.0 V)
Pressure Drop: 1.4 MPa (202 psi)
Flow Rate: 0.5 mL/min
Mobile Phase (v/v): 70%, Acetonitrile
30%, Ammonium Acetate 100 mM; pH 6.8
Overall ionic strength = 30 mM



Chromatographic Data

No.	Compound	Time (min)	Retention factor	Asymmetry
	t_0 void volume	1.0	-	-
1	EDTA	4.4	3.4	1.1