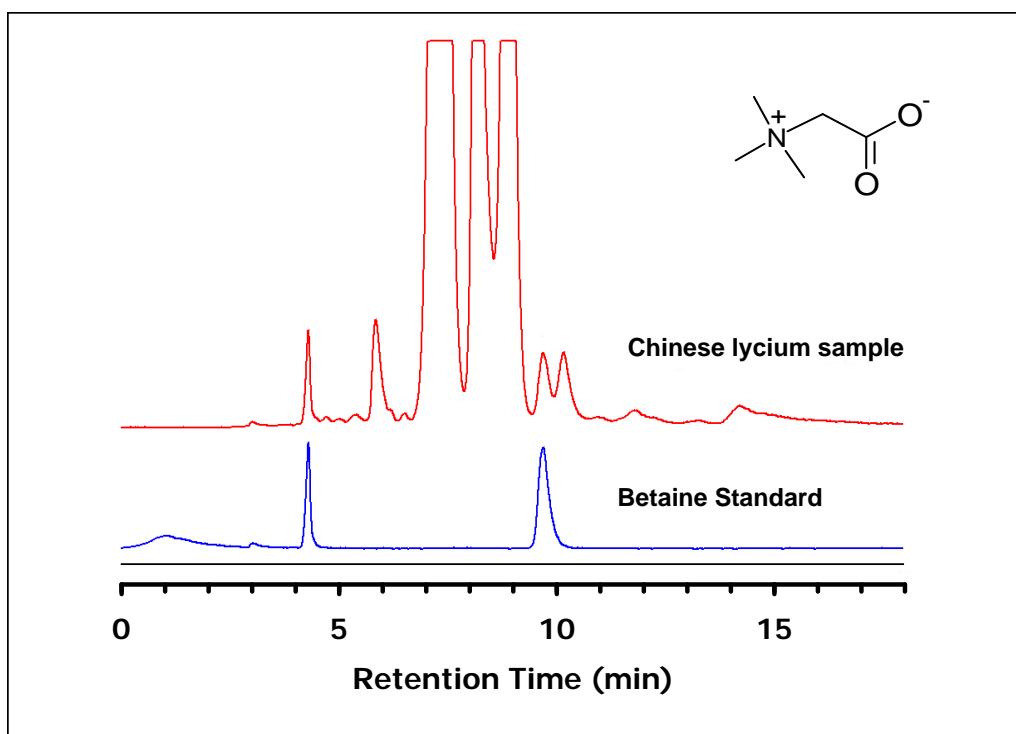


ZIC[®]-HILIC Separation of Betaine from Chinese Lycium

Chromatographic Conditions

Column: ZIC[®]-HILIC, PEEK 250 x 4.6 mm, 5 μm, 200 Å (P/N 2712-255)
Injection: 20 μL raw sample diluted by 50% in water
Detection: ELSD (neb=40°C, evap=30°C, gas=1.6 SLM)
Flow Rate: 1.0 mL/min
Mobile Phase (v/v): 75%, Methanol
25%, Ammonium Acetate 10 mM, pH 6.0
(total ionic strength 2.5 mM)



Chromatographic Data

No.	Compound	Time (min)	Retention factor	
	t_0	void volume	2.5	-
1	Betaine	10.4	3.2	

More information can be found at: www.polymerlabs.com//technical_bulletins/TB1074

Quantification of Betaine in Chinese Lycium using HILIC and Evaporative Light Scattering Detection