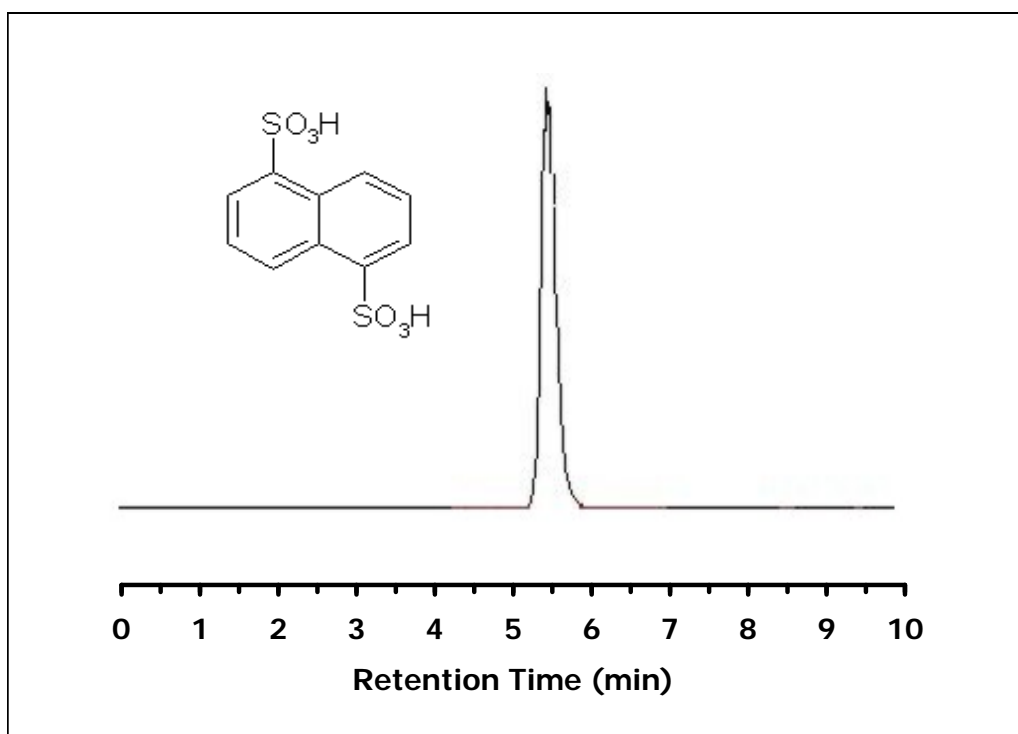


ZIC[®]-HILIC Separation of 1,5-naphthalenedisulphonic acid**Chromatographic Conditions**

Column: ZIC[®]-HILIC, PEEK 150 x 4.6 mm, 5 µm, 200 Å (P/N 2712-155)
Injection: 10 µL in mobile phase
Detection: UV @ 288 nm (UFS 1.0 V)
Column Temperature: 40°C
Flow Rate: 0.5 mL/min
Mobile Phase (v/v): 80%, Acetonitrile
20%, Ammonium Acetate 10 mM, pH 6.8
(total ionic strength: 2 mM)

**Chromatographic Data**

No.	Compound	Time (min)	Retention factor	
	t_0	void volume	3.0	-
1	1,5-naphthalenedisulphonic acid	5.5	0.6	