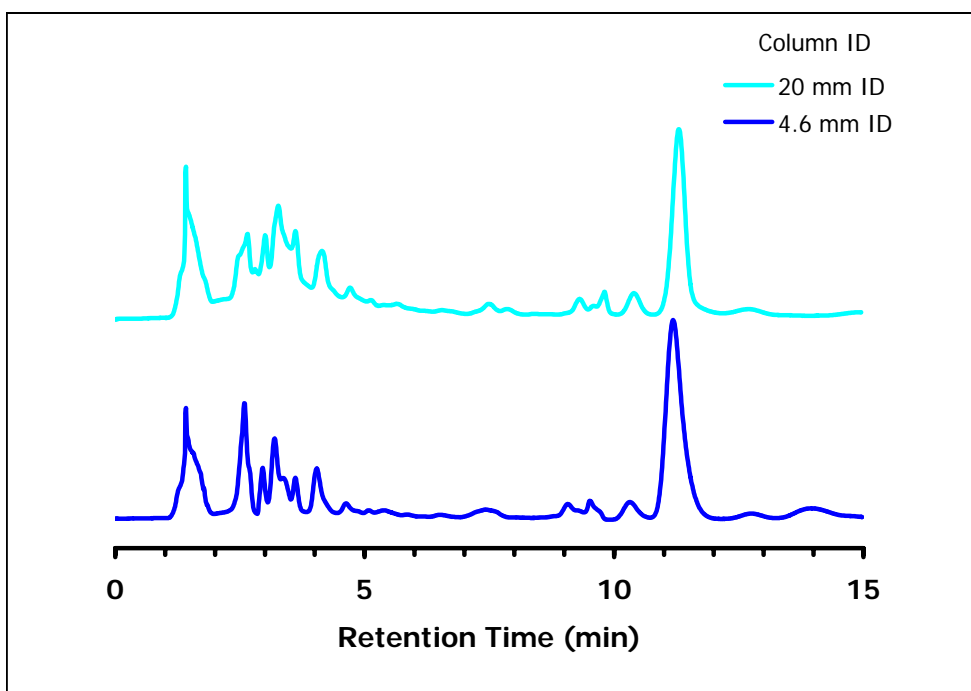


Upscaling from 4.6 mm to 20 mm ID ZIC®-HILIC Column

Large Volume Injection = 10 % of Column Volume

Chromatographic Conditions

Column: ZIC®-HILIC,SS 150 x 20 mm, 5 µm, 200 Å (P/N 2912-623)
 ZIC®-HILIC, PEEK 150 x 4.6 mm, 5 µm, 200 Å (P/N 2712-155)
 Injection: 250 and 5000 µL of white wine diluted 1:3 with acetonitrile
 Detection: UV @ 240 nm (UFS 1.0 V)
 Pressure Drop: 5.0 MPa (720 psi)
 Flow Rate: 20 and 1.0 mL/min
 Mobile Phase (v/v): 80%, Acetonitrile
 20%, Ammonium Acetate 200 mM



Chromatographic Data (250 µL or 5 mL injection)

No.	Compound	Time (min)	Retention factor	Assymetry
1	void volume (t_0)	1.5	-	-
2	Ascorbic Acid	11.3	6.5	1.01