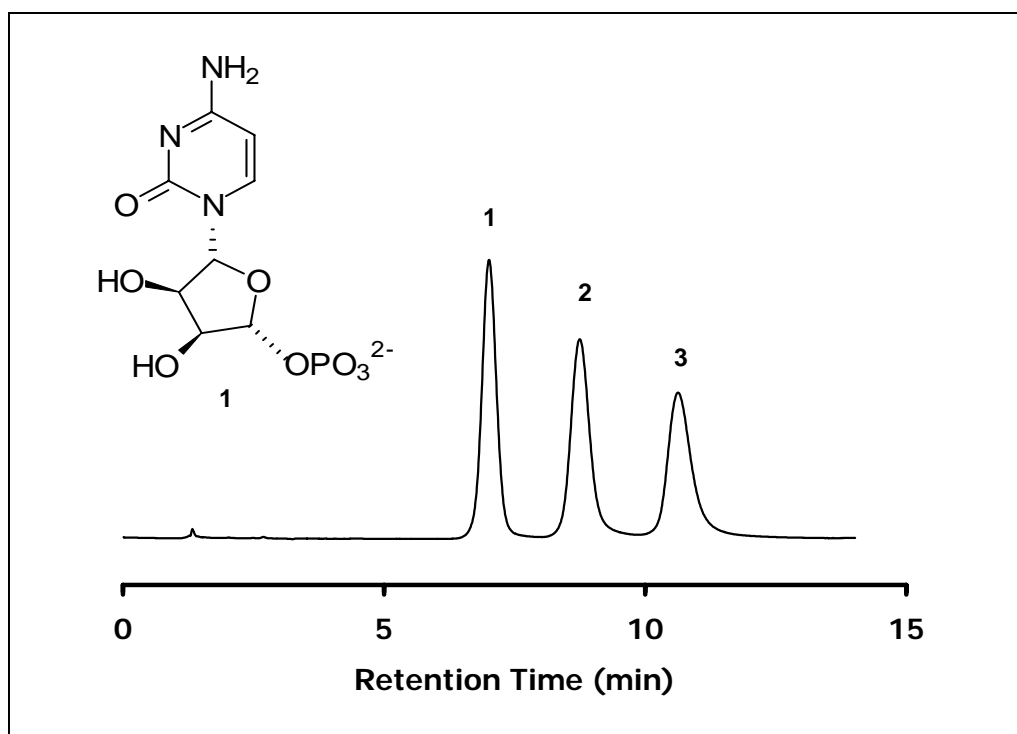


ZIC®-HILIC Separation of CMP, CDP and CTP

Chromatographic Conditions

Column: ZIC®-HILIC, PEEK 100 x 4.6 mm, 5 µm, 200 Å (P/N 2712-105)
 Injection: 5 µL in mobile phase
 Detection: UV @ 259 nm
 Flow Rate: 0.7 mL/min
 Mobile Phase (v/v): 70%, Acetonitrile
 30%, Ammonium Acetate 100 mM, pH 5.35
 (total ionic strength 30 mM)



Chromatographic Data

No.	Compound		Time (min)	Retention factor
	t_0	void volume	1.4	-
1	CMP	Cytidine-monophosphate	7.0	4.0
2	CDP	Cytidine - diphosphate	8.8	5.3
3	CTP	Cytidine - triphosphate	10.7	6.6