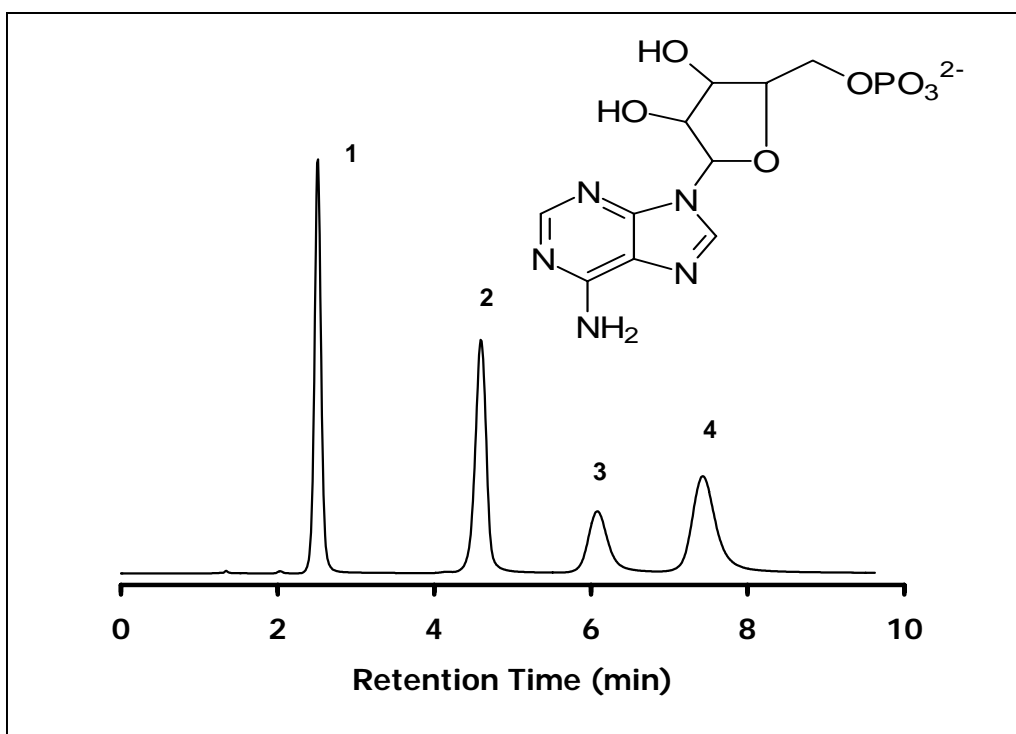


ZIC[®]-HILIC Separation of cAMP, AMP, ADP and ATP

Chromatographic Conditions

Column: ZIC[®]-HILIC, PEEK 100 x 4.6 mm, 5 μm, 200 Å (P/N 2712-105)
 Injection: 5 μL in mobile phase
 Detection: UV @ 259 nm
 Flow Rate: 0.7 mL/min
 Mobile Phase (v/v): 70%, Acetonitrile
 30%, Ammonium Acetate 100 mM, pH 5.35
 (total ionic strength 30 mM)



Chromatographic Data

No.	Compound		Time (min)	Retention factor
	t_0	void volume	1.4	-
1	cAMP	cyclic adenosine-monophosphate	2.5	0.8
2	AMP	adenosine-monophosphate	4.6	2.3
3	ADP	adenosine-diphosphate	6.1	3.4
4	ATP	adenosine-triphosphate	7.5	4.4