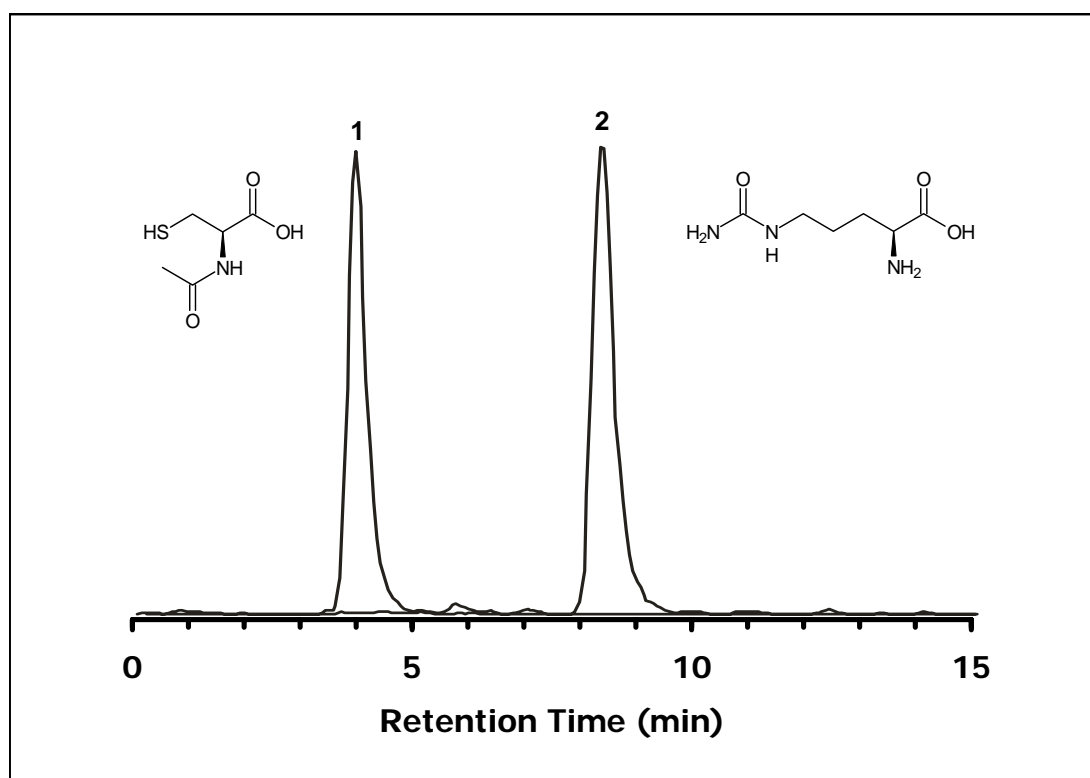


ZIC®-HILIC Separation of N-Acetyl-L-Cysteine, Citrulline**Chromatographic Conditions**

Column: ZIC®-HILIC, PEEK 100 x 4.6 mm, 5 µm, 200 Å (P/N 2712-105)
Injection: 10 µL in mobile phase
Detection: ESI MS, neg. Mode
Flow Rate: 0.5 mL/min
Mobile Phase (v/v): 70%, Acetonitrile
30%, Ammonium Acetate 100 mM, pH 5.6

**Chromatographic Data**

No.	Compound	Time (min)	Retention factor
	void volume (t_0)	2.0	-
1	N-Acetyl-L-Cysteine	3.8	0.9
2	Citrulline	8.3	3.2