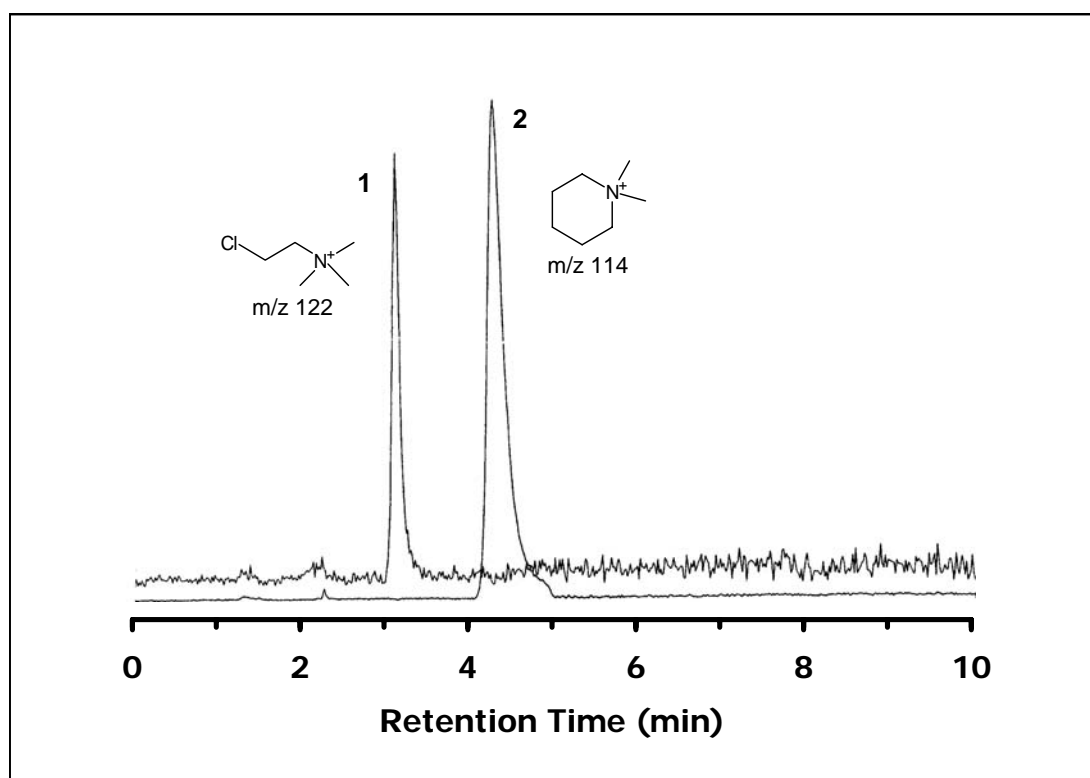


ZIC®-HILIC Separation of Chlormequat and Mepiquat

Chromatographic Conditions

Column: ZIC®-HILIC, PEEK 100 x 2.1 mm, 3.5 µm, (P/N 2702-102)
Injection: 20 µL in mobile phase
Detection: Electrospray-MS in positive mode (ESI+)
Single ion monitoring (SIM) at m/z 114 and 122
Flow Rate: 0.2 mL/min
Mobile Phase (v/v): 80%, Acetonitrile
20%, Ammonium Acetate 25 mM
Temperature: Ambient



Chromatographic Data

No.	Compound	Time (min)	Retention factor
	void volume (t_0)	1.6	-
1	Chlormequat	3.1	0.9
2	Mepiquat	4.3	1.7

By courtesy of:

Dr.-Ing. Ludmila Havlik, Chemisches Labor Dr. Wirts + Partner, Hannover, Germany, www.wirts.de