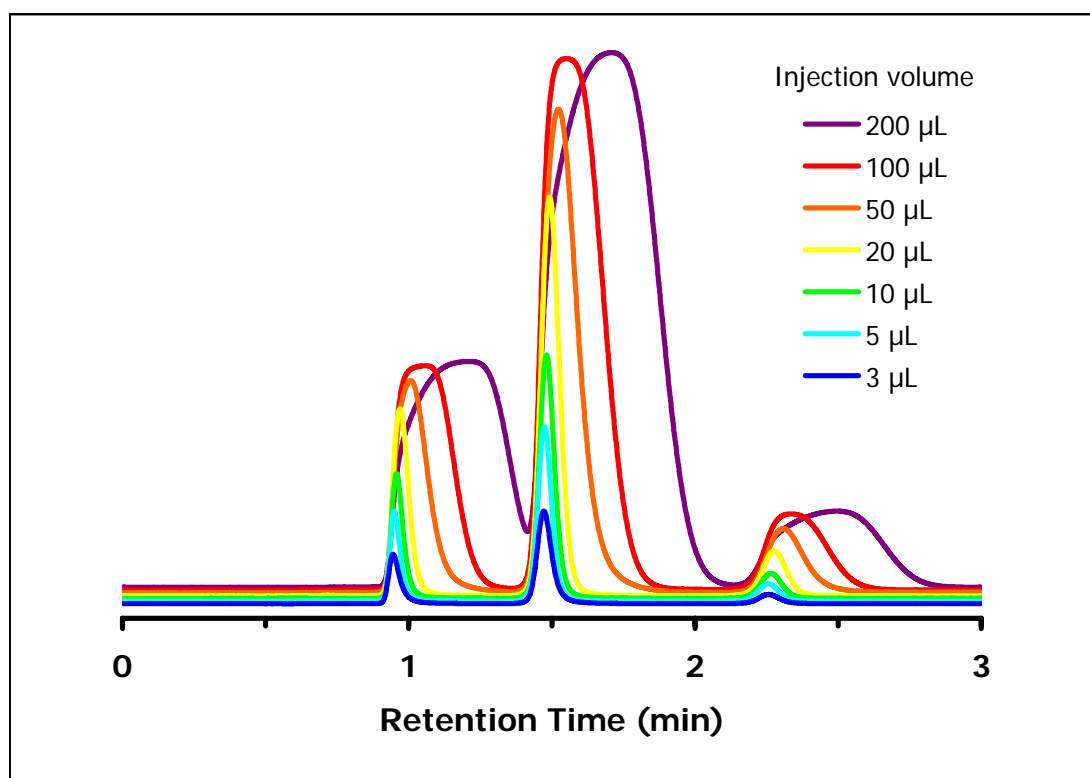


Volume Loadability of the ZIC[®]-HILIC Column

Chromatographic Conditions

Column: ZIC[®]-HILIC, PEEK 50 x 4.6 mm, 5 μm, 200 Å (P/N 2712-055)
 Injection: 3-200 μL in mobile phase
 Detection: UV @ 254 nm (UFS 1.0 V)
 Pressure Drop: 1.1 MPa (158 psi)
 Flow Rate: 0.5 mL/min
 Mobile Phase (v/v): 80%, Acetonitrile
 20%, Ammonium Acetate 5 mM



Chromatographic Data (3 μL injection)

| No. | Compound | Time (min) | Retention factor | Resolution |
|-----|--|------------|------------------|------------|
| 1 | Toluene (1 mg/mL), void volume (t_0) | 0.9 | - | - |
| 2 | Uracil (50 μg/mL) | 1.5 | 0.57 | 6.3 |
| 5 | Cytosine (30 μg/mL) | 2.3 | 1.40 | 6.9 |