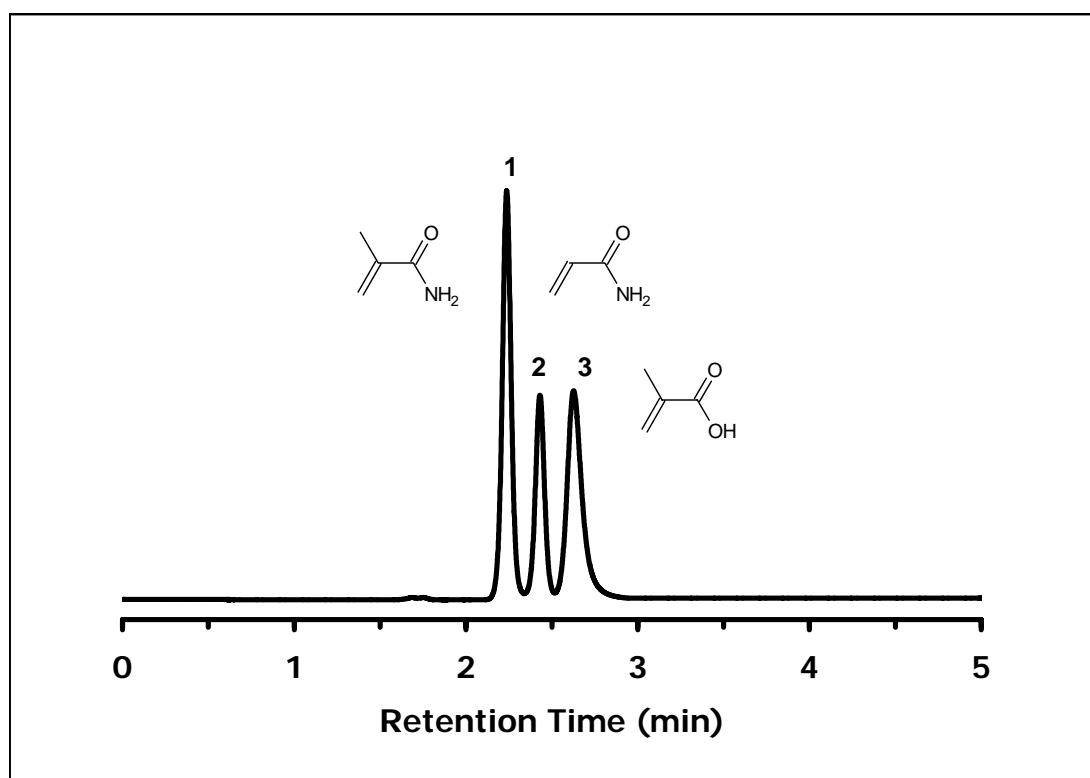


## Separation of Methacrylamide, Acrylamide, Methacrylic Acid

### Chromatographic Conditions

Column: ZIC®-HILIC, PEEK 150 x 4.6 mm, 5 µm, 200 Å (P/N 2712-155)  
Injection: 5.0 µL  
Detection: UV @ 210 nm (UFS 1.0 V)  
Pressure Drop: 8.0 MPa  
Flow Rate: 1.0 mL/min  
Mobile Phase (v/v): 95%, Acetonitrile  
5%, Acetic Acid 50 mM



### Chromatographic Data

No.	Compound	Time (min)	Retention factor	Resolution
	void volume ( $t_0$ )	1.5	-	-
1	Methacrylamide	2.2	0.49	-
2	Acrylamide	2.4	0.62	2.00
3	Methacrylic acid	2.6	0.75	1.55