

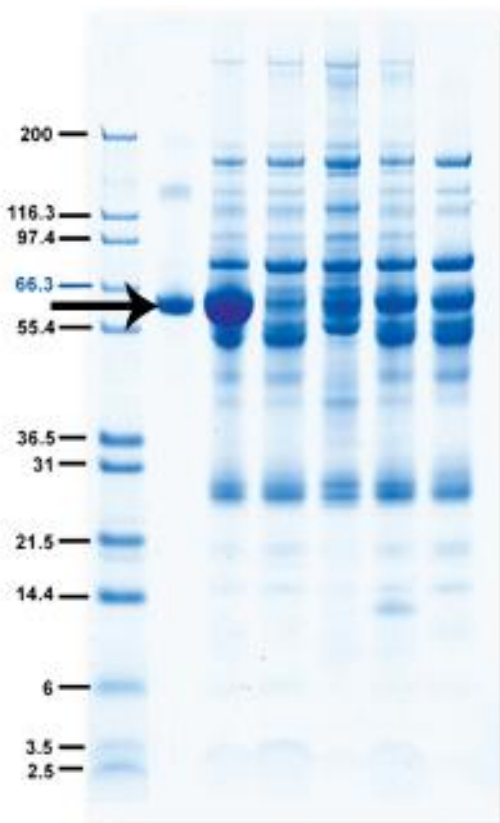
>99% Removal of Albumin and IgG

ProteaPrep™ High Abundance Serum Protein Depletion Kits from Protea

- New recombinant affinity ligand permits highly specific and reproducible [albumin and IgG removal](#) to facilitate the enrichment and analysis of lower abundant serum proteins.
- >99% efficiency for depletion of human serum albumin and IgG
- Compatible with a wide variety of animal species
- Simple and easy to use – process samples in less than 20 minutes
- Disposable, cost-effective SpinTube™ design eliminates the risk of carryover or sample contamination
- Preparation of serum samples for downstream analysis by SDS-PAGE, 2D gel electrophoresis and mass spectrometry
- Related ProteaPrep products are available for capture and recovery of albumin and IgG, enabling the analysis of each intact protein.



Part of Our ProteaPrep Product Lines
Visit us online to explore our complete line of depletion and recovery sample prep kits.



The figure shows that the [ProteaPrep Albumin Depletion Kit](#) was more efficient at removing albumin (black arrow indicates the HSA band) from serum samples than chemical depletion (Qin et al. Proteomics 2005, 5, 2656-2664), Vivapure® Anti-HSA depletion columns and SwellGel® Blue depletion kits.

- Lane 1: MW Markers
- Lane 2: HSA Standard
- Lane 3: Control Serum (non-depleted)
- [Lane 4: ProteaPrep HSA Depletion Kit](#)
- Lane 5: Chemical Depletion of HSA
- Lane 6: Vivapure Anti-HSA Kit
- Lane 7: SwellGel Blue HSA Depletion Kit

The data shown is courtesy of the Van Eyk Research Group at Johns Hopkins University, Baltimore, MD.

SwellGel® is a registered trademark of Pierce Biotechnology, Inc.
Vivapure® is a registered trademark of Vivascience AG (Sartorius group)